



TRELLEBORG

Trelleborg XP1000



INTENSITY
MAXIMUM



XP1000 Brings more to your business

Trelleborg expertise in material handling applications has led to the development of the XP1000, specifically designed for maximum intensity applications.

The new product is the perfect tire for warehouse operations, port yards, shop floors and any material handling ground service, showing superior performance in terms of mileage, durability, fuel consumption, stability and comfort.



**EXTENDED
TIRE LIFE**



**LOW FUEL
CONSUMPTION**



**SUPERIOR
COMFORT**



**EXCELLENT
STABILITY**



**LESS
ENVIRONMENTAL
IMPACT**



**EASY TIRE
REPLACEMENT**

Superior performance for maximum intensity applications

The XP1000 gives maximum strength to maximum intensity applications. You can count on top performance at top speeds, heavy loads and long days.



INTENSITY VERY LOW

INTENSITY LOW

INTENSITY MEDIUM

INTENSITY HIGH

INTENSITY MAXIMUM

Next generation design

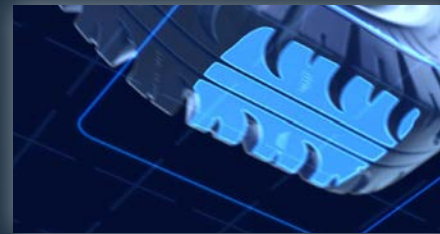
The XP1000 advanced treads are made with high performance compounds meaning long lasting life both indoors or out. In addition, it integrates the Pit Stop Line that lets you know with 100% accuracy when your tires need replacing.

- 1 Central wide contact area with circumferential rib profile minimizes vibration, enhancing handling performance indoors
- 2 Very deep lugs provide optimum traction for outdoor applications
- 3 Extra-deep tread profile maximizes service life
- 4 New concave sidewall shape guarantees optimum comfort
- 5 Protruding rim protector minimizes damage to wheels



Patented pattern design

Cutting edge technology for outstanding results



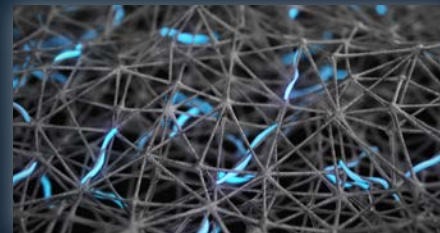
New tread pattern

Made up of high performance materials to provide an extremely long lifespan even with the most demanding applications.



Middle cushion layer

Makes sure internal tire temperatures are always under control, ensuring top performance also in extreme working conditions and absorbing road roughness, minimizing vibrations while maximizing operator comfort and safety.



Innovative fiber compound

More rigid than standard ones, it keeps a tighter grip on the rim, increasing vehicle stability even with heavy loads.



APPROX. 100 HOURS
TIRE LIFE REMAINING

The right tire for your needs

Our unique labelling system helps customers find the perfect tire for their job at hand. Check out our Trelleborg tire reference labels by:

- Intensity
- Compound
- Pit Stop Line*

So you can determine the best fitting tire to meet the demands of your operations.



Available compounds

MULTI PURPOSE

Multipurpose: Premium compound with excellent wear and rolling resistance.

NON MARKING

Non marking: Premium white compound designed to keep floors free from tire marks. Excellent wear and rolling resistance. Exceptional heat dissipation.

ELECTRICALLY CONDUCTING

Electrically conducting: Specialized black compound to enhance safety in flammable and explosive environments. This compound discharges electricity and avoids spark generation.

PRO HD

ProHD: Specialized compound for heavy duty applications. Provides higher load carrying capacity. Uptime at its best.

PRO TEX

ProTex: Unique non-marking compound that features electrically conducting properties.

PRO ENERGY

ProEnergy: Cool running compound specifically designed for operations running long distances at constantly high speeds. It also features lower battery consumption for electric forklifts.

HEAT SHIELD

Heatshield: Flame retardant super premium compound designed to withstand the high ambient temperatures.

* where available

More sustainable than ever

The innovative fiber compound is made with recycled materials, our exclusive Pit Stop Line minimizes waste while the advanced tire design provides top performance even with reduced weight. This means huge savings in materials and deep reduction in CO2 emissions.



Maximum value for your operations

With XP1000 you can lower your costs while increasing at the maximum level the efficiency of your machines. It is made to last longer than competitors, which means a lower cost per hour of operation over its lifespan. The advanced construction and compound formula provides a very low rolling resistance for extra battery power for electric forklifts and reduces fuel consumption for internal combustion trucks.

Wear rate - Index *Lower is better*



XP1000

Competitor A

Competitor B

**Up to 9%
better than competitors**

Fuel/battery consumption - Index *Lower is better*



XP1000

Competitor A

Competitor B

**Up to 7%
better than competitors**

Reliability and safety at their best

The new XP1000 aims to provide maximum reliability and safety for machine operators.

Extensive research and development when it comes to employing new materials assure tire reliability is strong, preventing heat generation during prolonged use. It delivers 21% higher temperature resistance than competitors' brands even under maximum intensity applications and a comfort level 13% above other premium players.

Longer running times, greater life span, less waste mean a drive toward efficiency, sustainability and the wellbeing of people worldwide.

Endurance rate - Index *Higher is better*

100



XP1000

91



Competitor A

79



Competitor B

Up to 21%
better than competitors

Comfort rate - Index *Higher is better*

100



XP1000

87



Competitor A

91



Competitor B

Up to 13%
better than competitors

XP1000

MAXIMUM INTENSITY



Size	Alternative Size	Rim	Pattern	LOC	Product Dimensions [inch]		Load capacity [lbs]		
					Overall Diameter	Section Width	Static	Counterbalanced lift trucks up to 16 mph	
								Load Wheel	Steering Wheel
3.00-4**		2.10-4	Traction		9,9	3,3	650	575	430
3.00-4**		2.50C-4	Traction		9,9	3,3	650	575	430
4.00-4**		2.50C-4	Traction		12,1	3,6	1.380	1.180	905
4.00-8*		3.00D-8	Traction	•	15,9	4,3	2.425	2.095	1.610
4.00-8*		3.75P-8	Traction		15,9	4,7	2.590	2.225	1.710
15x4½-8	125/75-8	3.00D-8	Traction	•	14,7	4,5	2.670	2.295	1.765
15x4½-8**	125/75-8	3.00D-8	Ribbed	•	14,8	4,6	2.670	2.295	1.765
15x4½-8	125/75-8	3.25D-8	Traction		14,7	4,5	2.670	2.295	1.765
5.00-8		3.00D-8	Traction	•	17,8	4,7	3.640	3.120	2.405
5.00-8		3.75P-8	Traction		17,8	5,7	3.835	3.295	2.535
16x6-8	150/75-8	4.33R-8	Traction	•	16,1	6,0	3.835	3.295	2.535
17x7-8**		4.33R-8	Smooth		16,9	6,3	4.760	4.100	3.155
18x7-8	180/70-8	4.33R-8	Traction	•	17,8	6,0	5.490	4.730	3.640
18x7-8**	180/70-8	4.33R-8	Smooth	•	18,0	6,2	5.490	4.730	3.640
18x9-8**		4.33R-8	Smooth		18,0	8,1	6.325	5.445	4.190
140/55-9	15x5.5-9	4.00E-09	Traction	•	14,9	5,3	3.000	2.580	1.985
6.00-9		4.00E-09	Traction	•	20,6	5,5	4.830	4.155	3.195
21x8-9	200/75-9	6.00E-09	Traction	•	20,4	7,3	7.055	6.075	4.675
6.50-10		5.00F-10	Traction	•	22,4	6,4	5.995	5.160	3.970
180/60-10		5.00F-10	Traction	•	17,9	6,4	6.160	5.315	4.080
200/50-10		6.50F-10	Traction	•	17,8	7,9	6.325	5.445	4.190
23x9-10	225/75-10	6.50F-10	Traction	•	22,9	7,9	8.820	7.595	5.840
7.00-12		5.00S-12	Traction	•	25,5	6,9	7.450	6.435	4.940
7.00-12**		5.00S-12	Smooth	•	25,6	6,8	7.450	6.435	4.940
23x10-12	250/60-12	8.00G-12	Traction	•	22,7	9,4	9.655	8.310	6.395
23x10-12**	250/60-12	8.00G-12	Smooth	•	23,0	9,4	9.655	8.310	6.395
27x10-12	250/75-12	8.00G-12	Traction	•	26,5	9,4	9.985	8.600	6.615
315/45-12		10.00G-12	Traction	•	22,6	11,3	11.485	9.890	7.605
23x5-13**		3.75P-13	Traction	•	24,3	5,4	3.835	3.295	2.535
5.50-15		4.5-15	Traction		26,0	5,9	5.490	4.730	3.640
6.00-15		4.5-15	Traction		27,2	6,2	5.995	5.160	3.970

Size	Alternative Size	Rim	Pattern	LOC	Product Dimensions [inch]		Load capacity [lbs]		
					Overall Diameter	Section Width	Static	Counterbalanced lift trucks up to 16 mph	
								Load Wheel	Steering Wheel
7.00-15*	29x8-15	5.5-15	Traction	•	28,4	7,7	9.070	7.815	6.010
7.00-15*	29x8-15	6.0-15	Traction		28,4	7,7	9.070	7.815	6.010
7.50-15**		5.5-15	Traction		29,3	7,6	9.985	8.600	6.615
7.50-15**		6.0-15	Traction		29,3	7,6	9.985	8.600	6.615
7.50-15**		6.5-15	Traction	•	29,3	7,6	9.985	8.600	6.615
8.25-15		5.5-15	Traction		31,7	8,3	11.815	10.175	7.825
8.25-15		6.5-15	Traction	•	31,7	8,3	12.145	10.470	8.045
28x9-15	225/75-15 (8.15-15)	7.0-15	Traction	•	27,0	8,7	9.985	8.600	6.615
250-15	250/70-15	7.0-15	Traction	•	27,9	9,5	12.145	10.460	8.045
250-15	250/70-15	7.5-15	Traction	•	27,9	9,5	12.145	10.460	8.045
300-15	315/70-15	8.0-15	Traction	•	31,8	10,1	14.980	12.895	9.920
355/45-15	28x12½-15	9.75-15	Traction	•	26,8	11,6	14.575	12.545	9.645
355/50-15		9.75-15	Traction	•	28,0	11,6	14.575	12.545	9.645
355/65-15	32x12½-15 (350-15)	9.75-15	Traction	•	32,2	11,6	19.975	17.195	13.230
400/60-15		11.00-15	Traction		32,1	12,8	22.950	19.775	15.200
7.50-16	250/80-16	5.5-16	Traction		29,6	8,1	10.240	8.820	6.780
9.00-20**	270/95-20	6.5-20	Traction		38,8	9,1	14.980	11.905	9.920
9.00-20**	270/95-20	7.0-20	Traction		38,8	9,1	14.980	11.905	9.920
10.00-20**	290/95-20	6.5-20	Traction		40,5	10,3	16.235	12.895	10.750
10.00-20**	290/95-20	7.5-20	Traction		40,5	10,3	16.645	13.230	11.025
10.00-20**	290/95-20	7.5-20	Smooth		39,7	9,8	16.645	13.230	11.025
10.00-20**	290/95-20	8.0-20	Traction		40,5	10,3	16.645	13.230	11.025
11.00-20**	300/95-20	8.0-20	Traction		40,9	10,2	18.145	14.420	12.015
12.00-20**	330/95-20	8.0-20	Traction		43,0	10,9	20.975	16.665	13.890
12.00-20**	330/95-20	8.0-20	Smooth		42,9	10,2	20.975	16.665	13.890
12.00-20**	330/95-20	8.5-20	Traction		43,0	10,9	20.975	16.665	13.890
12.00-20**	330/95-20	8.5-20	Smooth		42,9	10,2	20.975	16.665	13.890
12.00-20**	330/95-20	10.0-20	Traction		43,0	13,2	21.640	17.195	14.330
12.00-20**	330/95-20	10.0-20	Smooth		42,9	12,3	21.640	17.195	14.330
355/50-20*		10.0-20	Traction	•	32,8	13,2	22.970	19.775	15.210
355/50-20*		10.0-20	Smooth	•	32,8	12,2	22.970	19.775	15.210
465/55-20*		16.0-20	Traction		40,2	18,3	29.960	23.810	19.840
12.00-24**	330/95-24	8.5-24	Traction		46,7	12,4	22.310	17.725	14.770
12.00-24**	330/95-24	10.0-24	Traction		46,7	12,4	24.965	19.840	16.535
14.00-24**	385/95-24	10.0-24	Traction		52,0	13,2	30.800	24.470	20.395
14.00-25**		11.25-25	Traction		52,5	14,7	32.740	26.015	21.660
16.00-25**	445/95-25	11.25-25	Traction		56,9	16,1	41.610	33.070	27.560

* Available in June 2022

** Available in Q4-2022. Design dimensions.



Printed on recycled paper



Discover our virtual showroom
virtualshowroom-wheels.trelleborg.com



Discover our website
trelleborg.com/wheels/us

Follow us



Trelleborg Wheel Systems Americas, Inc
570 Trelleborg Drive, Spartanburg, SC 29301
Toll Free Phone Number: 1-866-633-8473
www.trelleborg.com/wheels/us

